

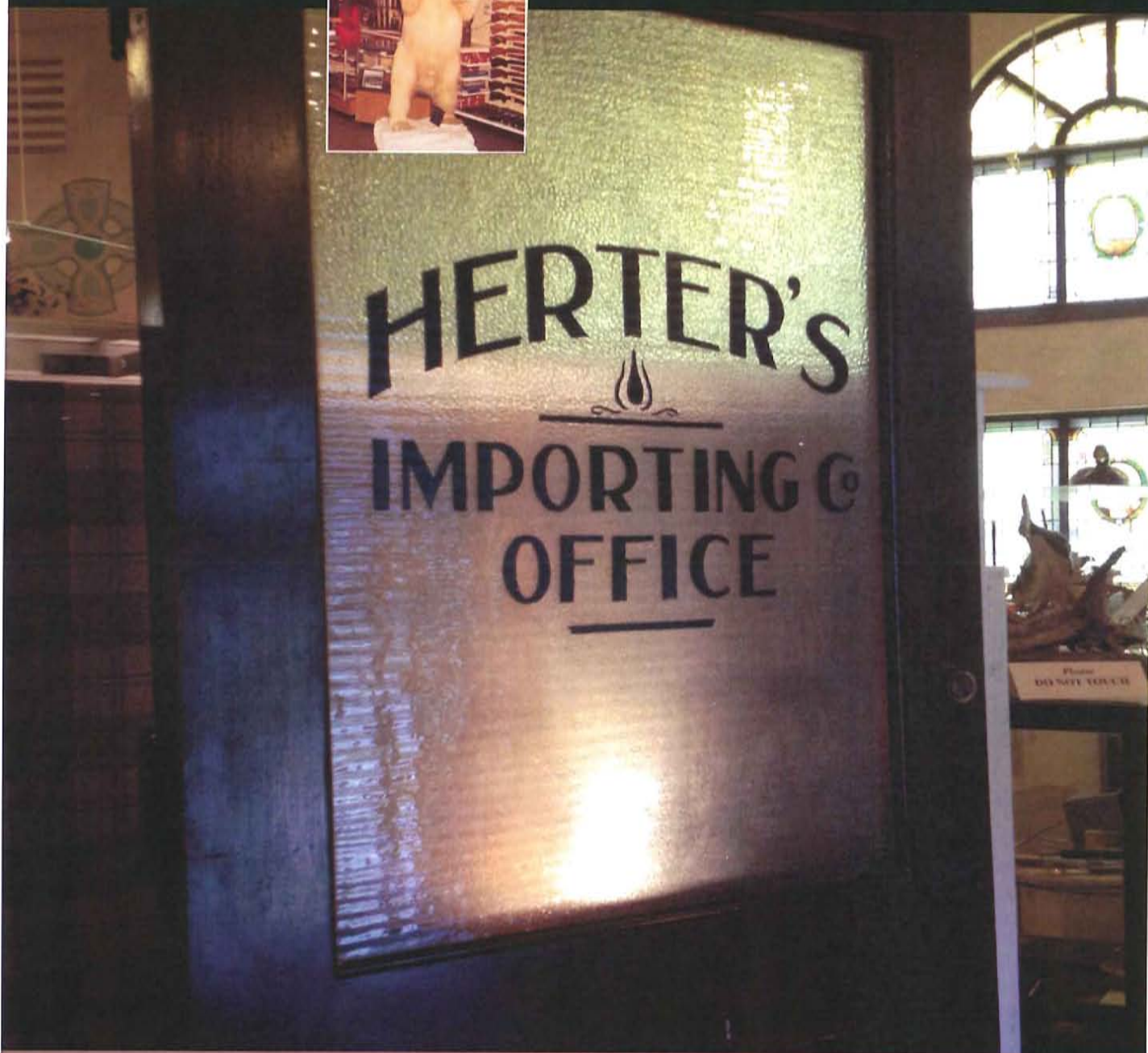
Waseca County Historical Society

History Notes

Volume 36 Issue 3 / Sept 2014



www.historical.waseca.mn.us / LOOK FORWARD TO OUR PAST



ON THE COVER: What was George Herter's office like? See his photos, catalogs, and notes to employees.
(Inset) The mounted Polar Bear in the original Herter's store, where did it go?

INSIDE: Were you there? "Celebrating Herter's" Fundraiser | Timeline Exhibit
Grants—WE GOT 'EM! | Hofmann Honey Farm—On the National Register | Annual
Meeting & Brunch November 9 | Holiday Open House, a Herter's Party, December 6

History Notes is a publication of the Waseca County Historical Society ©2014
P.O. Box 314, Waseca, MN 56093
315 Second Avenue N.E.
507-835-7700
www.historical.waseca.mn.us

WCHS 2014 Board of Directors:

Audra Nissen-Boyer, President
Kale Youngberg, Vice-President
David Pope, Secretary
Tom Piche, Treasurer
Rev. Charles Espe
Jim King
Henry Lewer
Jerry Rutledge
Jim Tippy
Brad Wendland
Dave Dunn
Linda Grant
Marilee Reck
Jim Peterson, County Commission
Al Rose, City Council
Don Wynnemer, Ex Officio

Staff:

Joan Mooney, Co-Executive Director
Programs & Research
program@historical.waseca.mn.us

Sheila Morris, Co-Executive Director
Development & Exhibits
photo@historical.waseca.mn.us

Pauline Fenelon, Artifacts/Library
collection@historical.waseca.mn.us

Vanessa Zimprich, Artifacts/Website
artifact@historical.waseca.mn.us

Linda Taylor, Researcher
research@historical.waseca.mn.us

Nancy Nelson-Deppe, Bookkeeper
account@historical.waseca.mn.us

WCHS HOURS: Tuesdays-Fridays, 9-5
Closed Mondays



The Minnesota Historical and Cultural Grants Program has been made possible by the Arts and Cultural Heritage Fund through the vote of Minnesotans on November 4, 2008. Administered by the Minnesota Historical Society.

From the Co-Executive Directors . . .

The "community conversation" about Herter's has started.

If a local history organization such as WCHS is supposed to collect the history and the stories, we have to find and convince people that their stories are significant! No wonder this FIRST EVER Herter's exhibit required so much time and effort. *We didn't know what we would find, or where.*

We knew that we had to start capturing the stories, the facts, the artifacts before there would be no one left to talk about them.

The story of Herter's is so expansive, so impactful, and even incredulous that in order to not be overwhelmed, we decided early on to divide the exhibit into three parts. Yes, this is only the first Herter's exhibit. Next summer, "Collecting Herter's" will evolve into "The Essential Herter's," and the following summer 2016 "George Herter, the One and Only," focusing on his books and publications.

A Herter's documentary in the works

More than five years ago, WCHS was contacted by filmmaker Gideon Kennedy, who was interested in producing a documentary on Herter's. He and his crew from Mobile, AL came to Waseca for one week interviewing and videotaping the stories and experiences surrounding Herter's. The raw footage captured will eventually be donated to WCHS archives, and a documentary film will be produced. Perhaps the premiere will be in Waseca at a time yet to be determined.

We did it!

WCHS presented FOUR major events in a 30-hour period.

It was decided two years ago that 2014 would be our fundraising year. A Herter's exhibit would draw collectors and former customers and employees from all over the region and country. It did. There were guys from Kentucky, Kansas, Iowa, Wisconsin,

Michigan and from all over Minnesota who traveled to the FIRST EVER Herter's Swap Meet and Exhibit opening weekend.

These guys remember Herter's and are proud of their collections. The Swap Meet gave them a rare opportunity to share information and proudly display their items, to sell and/or trade, too. We have already tentatively scheduled another Herter's Swap Meet for next August 2015.

The Craft BeerFest was added to the fundraiser as current and popular complement to the other events. And beer goes with hunting and fishing, right guys?

Finally, the Saturday evening many people had been waiting for years to happen was the Rock & Roll "Reunion." The musicians gathered and practiced for a month, and their followers appeared, over 400 of them, who rocked and rolled until midnight at the Waseca County Fairgrounds. Joan Mooney and husband Jerome Broughten coordinated the music bringing back the Mullens, Steve McLoone, "Tweed" Johnson, Steve Noetzel, Larry Hofmann, Bob Grobe, Doug Neste, Bob Steffan, Keith Deike, Danny Westphal, John

Anthony, and (standing in for Jim Koza), Jody Wynnemer. Jim Downie, original emcee of the Teen Canteens back in the '60s was also on hand to introduce the music again. Happy "baby boomers" enjoyed the night!

The Museum gets a new roof

If you were a pilot or a bird flying over Waseca this summer, you would have noticed that the Museum has a new roof! It may look like an igloo or marshmallow instead of the dome, because now the roof is white! And, more importantly, it's water tight! Our heartfelt thanks go to Marvin and Ardis Sutter for the January 2014 Annual Fund donation that made this possible. Not knowing what the exact cost was to be, the Sutter donation made it possible to move forward with the project in June and July. Yet to be completed by Greener World Solutions.

CONTINUED ON PAGE 4



These museum stained glass windows are waiting to be restored, but not for long thanks to the fundraiser.





ABOVE LEFT: Jerome Broughten, Bob Stephen, Larry Hofmann, and Doug Neste rock the night away at the Rock & Roll Revue; TOP RIGHT: Dennis Born, Mark Bartelt and Jim Downie; ABOVE: John Born at the County Fair admiring Cletus Hane poster; ABOVE: WCHS's souvenir tasting mug still on sale at the Museum Gift Shop \$1; FAR LEFT: The Swap Meet at the Fairgrounds; LEFT: Sheila Morris and Mr. Haney, a Herter's collector who traveled from Kentucky; LOWER LEFT: Terry Middlestaedt and a friend at the Craft Beer-Tasting; BELOW: Film maker Gideon Kennedy, with Sheila Morris and Joan Mooney, after one week of interviewing past employees and customers and filming the Herter's events.



And, our beautiful stained glass windows will be restored later this Fall with restoration to the exterior storm windows that now barely protect them.

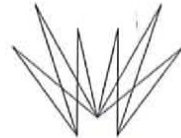
The Timeline Exhibit Plan Implementation is Funded, \$119,208

BIG NEWS

As we write this newsletter, we have just received notice of approval of our Minnesota Historical and Cultural Heritage (Legacy) Grant request for \$119,208 for the Timeline Implementation Project. This will fund the Design, Fabrication and Installation of 17 Timeline panels, the

balcony slant panels, plus 20 new exhibit cases for the Unique Stories of Waseca County. This project, in its many forms, has been on the "back burner" of WCHS goals for many years; and in serious reformatting with new requests during the last two years.

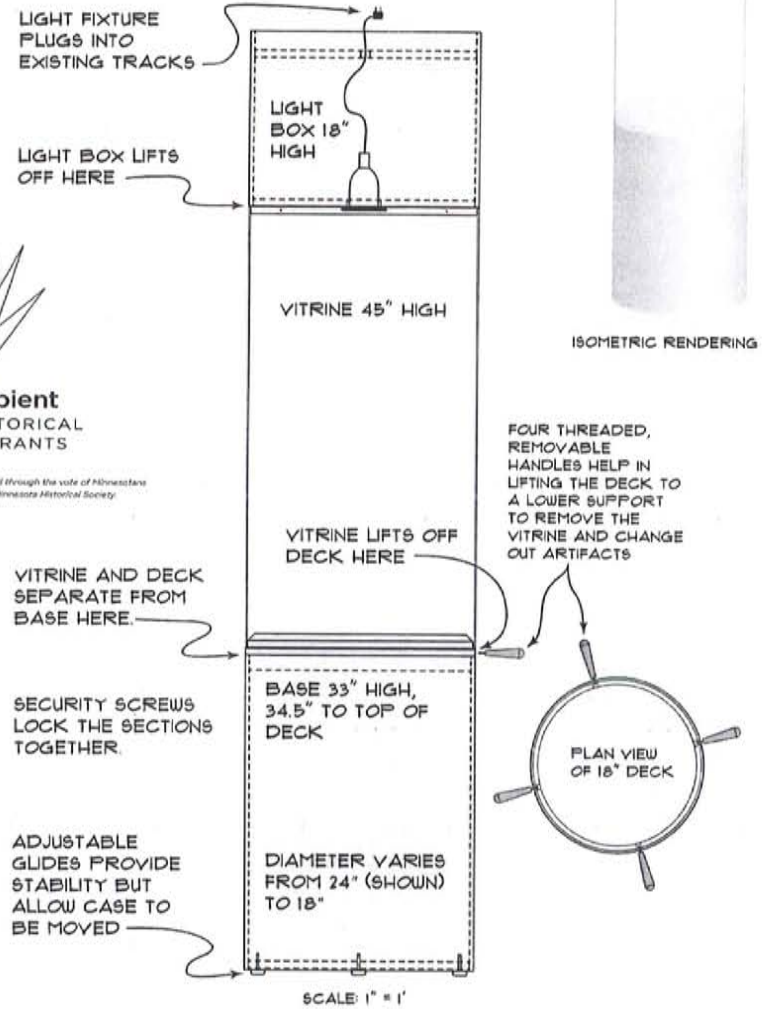
We are particularly grateful not only to MHCHG program, but also to the Carl and Verna Schmidt Foundation, to John Priebe/ Principal Financial Group Foundation, to Bill and Patti Hoversten, and Bernie Gaytko/First National Bank, for partial matching donations needed to show collaborative support. We must also thank Don Wynnemer for his years of preparation of the balcony spaces to bring us to this point in time. Don saved WCHS tens of thousands with his own labor, sanding and varnishing the floors, building a cost-effective track lighting system, moving old cases, and knocking out dividing walls of the balcony. In addition, the preparatory phases have been completed—the creation of the Timeline Exhibit Plan in the first place, then the Research and the Scriptwriting Phases funded by previous Legacy Grants. There will be Preliminary Timeline Panels produced early in 2015 for a period of community comment. There is still much to do, but we hope to be installing by the end of 2015. Here we go! *This project has been financed in part with funds provided by the State of Minnesota through the Minnesota Historical Society from the Arts & Cultural Heritage Fund.*



Grant Recipient
MINNESOTA HISTORICAL & CULTURAL GRANTS

Made possible by the Arts and Cultural Heritage Fund through the vote of Minnesotans on November 4, 2008. Administered by the Minnesota Historical Society.

Drawing A: Cylindrical Exhibit Case



“Collecting Herter’s” on exhibit through December

Created without grant support with the cooperation of local collectors, past Herter’s employees and volunteers guided by our dedicated staff.

The Herter’s Exhibitors:

**Deney Hofmeister
Randy Hofmeister
Bob Barrie
Myron Barrie
Vern Ferch
Tim Terrell
John Matz
Wayne Johnson
Jeanne Kogi
Mark Tobin
Dale Kugath**

The Waseca County Historical Society is remembering the company that put Waseca, Minnesota on the map in the 1940s—Herter’s. There are still many people who remember the joy of walking into Herter’s store or receiving another Herter’s catalog in the mail. But there are many more who don’t. For their sake, come in and learn more about the impact of Herter’s on the Waseca area, and bring another generation. The story of Herter’s IS one of the unique stories of Waseca County! **A “Herter’s Holiday Open House” is scheduled for Saturday, December 6, 12-5 p.m. FREE and open to the public.**



At the center of the exhibit is the young black bear shot with a bow and arrow by Bob Barrie, former Herter’s employee who managed the archery department at Herter’s, Inc. TOP: Transporting the mounted bear into the museum was no small task. Thanks to Kevin Clemons and staff from Suburban Furniture and Mr. Barrie, the bear arrived safely to “star” in our show. ABOVE: A re-creation of George Herter’s desk complete with catalogs and notes regarding production and sales. LEFT: Tim Terrell’s extensive fishing lure collection

Thanks to these generous donors & volunteers!

From June 1 to September 19, 2014
 These are quarterly new/renewed members, donations, acknowledgements. The WCHS Annual Report will list all members.

MEMBERSHIP

Lifetime Members

\$1,000 Donations to the WCHS
 Lifetime Endowment Fund providing ongoing interest support for Operations.
 (+ Deceased)

Allen, Mary
 +Britton, Joe
 Britton, Marjorie
 Brown Printing
 +Brown, Wayne "Bumps"
 Brynildson, Gladys
 Cooper, Gus
 Corchran, Liz
 Dahl, Robert M.
 Deef, Romelle and Robert
 Fette, Leo J. and Shirley
 First National Bank
 Fischer, Larry and Marian
 Fitzsimmons, Francis M.
 Fostveit, Donna
 Fox, Jim and Elaine
 Fuller, Boyd
 Gerding, Dr. James and Josephine
 Gores, Marjorie L.
 Haley, Sharon L.
 +Hecht, Sigri
 Homer, Margaret
 Johnson, Ronald J.
 Kastner, Bonnie
 Kiesler, Kal and Barbara
 Kopischke, Gerald and Barbara
 Lewer, Henry & Phyllis
 Markus, Richard
 McCarthy, George B. and Jean M.
 +Moriarty, Dorothy
 Oelke, Neta
 Peterson, Arlene
 Pommerenke, Gloria/Lori
 +Rethwill, W.H., Jr.
 Roundbank
 Rutledge, Jerry and Linda
 Searle, Rod and Ruth
 Sheeran, Betty and Bob
 Smith, Keith and Wilda
 Stauffer, Bruce and Mary Jane
 Strand, Mel
 Sutter, Marvin and Ardis
 Swenson, Virginia

Tippy, Jim and Moira
 +Wendland, Ken
 Wendland, Helen
 Webber, Wendy
 Wick, Bruce and Lorraine
 Winegar, Sharlene and George
 Wynnemer, Don and Margaret

Renewing Members

Albrecht, Louis (FL)
 Amsrud, Mary (MN)
 Arvesen, Eileen (MN)
 Ashbacher, Jean Larson (MN)
 Berger, Doris (MN)
 Bliven, Mark (MN)
 Bluhm, Jane (MN)
 Brown, Luverna (MN)
 Deppe, Nancy Nelson (MN)
 Elsner, Arlene (MN)
 Evers, Linda (MN)
 Forsythe, Diane (MN)
 Georgas, Peter (MN)
 Good, Russell (MN)
 Harguth, Dorothy (MN)
 Harloff, Sarah Finley (WI)
 Hogan, James (MN)
 Holmquist, Harlan (MN)
 Kastner, Bonnie (MN)
 King, Jim and Barb (MN)
 Lechner, Karen (MN)
 Linnihan, Mike (MN)
 Miller, Jean M. (MN)
 Poppe, Lisa (MN)
 Prail, Robert (MN)
 Rogers, Clinton (MN)
 Schultz, Harlan (MN)
 Schuster, Bonnie (MN)
 Suttliof, JoAnn (MN)
 Veit, Anita (NC)
 Youngberg, Kate (MN)

New Members

Bethke, Stacy (MN)
 Byron, Anne (MN)
 Evans, Patricia (VA)
 Fischer, Ruth E. (MN)
 Halgren, Dawn K. (MN)
 Holweger, Rachel (MN)
 Johnson, Jody (MN)
 Lemke, Cathy (WI)
 Lorenz, Laura (TX)
 Miller, Jeremiah and Jaala (MN)
 Miller, Stu and Mary (MN)
 Moyer, Greg and Brenda (MN)
 Nicolin, Jay and Nancy (MN)
 Noetzel, Steve (AR)
 Oblak, John (MN)
 Oftedahl, Kathy (MN)

Smith, Jacky (MN)
 Sponberg, Jana Lee, (VA)
 Willis, Keith (VA)

New Sustainer \$100

Halvorson, Mike and Jean (AZ)

DONATIONS

Bill and Patti Hoversten,
 \$250 partial match donation to Minnesota Historical & Cultural Heritage Grant request honoring the Clarence Johnston story

John Priebe,
 \$1,000 partial match donation to Minnesota Historical & Cultural Heritage Grant request, from the Principal Financial Group Foundation honoring his company commitment

Pearl Hoversten, \$500

Don and Margaret Wynnemer,
 \$2,000 matched by Exxon-Mobil Foundation, \$2,000

First National Bank, Bernie Gaytko, President; \$3,500 Pledge, a partial match donation to Minnesota Historical & Cultural Heritage Grant request for Timeline Implementation Project

2013 Annual Fund Drive

After 12/20/2013
 Stoehr, Harlan and Marlene

Bequests

To the Waseca County Historical Society Endowment Fund, from the estate of Rod Searle

Memorials

In memory of Joan Baynes
 by Tim and Audra Nissen Boyer
In memory of Lorraine Carlson
 by Mike and Bea O'Brien
 by Janette Larson, for Bailey-Lewer Lib.
 by Donna Fostveit
 by Don and Janet Priebe
 by Terri Ingram
In memory of Tony Boyer
 by Linda Grant
 by Jane Dunn
In memory of Anola Born
 by Alvin and Donna Miller
In memory of Barbara Sankovitz
 by family & friends

by Jim and Elaine Fox
 by Sharon Haley
 by Richard Earlander
 by Henry and Phyllis Lewer
In memory of June Senn
 by Jim and Elaine Fox
In memory of Harry McClune
 by Donna Fostveit

Appropriations

Otisco Township, \$400
 St. Mary Township, \$200
 New Richland Township, \$1,000
 Byron Township, \$250
 Wilton Township, \$300
 Blooming Grove, \$250

City of Waseca, \$2,250
 Second-half appropriation

Waseca County, \$60,000
 Second-half appropriation

Grants Approved

Carl and Verna Schmidt Foundation,
 \$10,000 match grant to Minnesota Historical & Cultural Heritage Fund Large Grant request for Design, Fabrication and Installation of Timeline Exhibits Project

Minnesota Historical & Cultural Heritage Fund,
 \$9,640 For Preliminary Timeline Panels-for community comment

Minnesota Historical & Cultural Heritage Fund,
 \$5,900 For National Register Nomination: Hofmann Farm and Apiaries

Minnesota Historical & Cultural Heritage Fund,
 \$119,208 For the Design, Fabrication and Installation of Timeline Exhibits Project

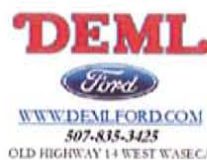
Volunteers: THANK YOU!

Dan Swenson, for museum grounds work last Spring.

County Fair Concession Volunteers:
 Dunn, Dave
 Espe, Charles



The Minnesota Historical and Cultural Grants Program has been made possible by the Arts and Cultural Heritage Fund through the vote of Minnesotans on November 4, 2008. Administered by the Minnesota Historical Society.



NEW RICHLAND HISTORICAL SOCIETY



Fostveit, Donna
 Grant, Linda
 Hunter, Jan
 Johnson, Wayne
 Jones, Karl
 Lechner, Karen
 Lundquist, Jean
 Meyer, Justine
 Nissen-Boyer, Audra
 Rieck, Cindy
 Rieck, Katherine
 Reck, Marilee
 Reck, Milo
 Wendland, Helen
 Youngberg, Kate

Herter's Events Volunteers:

Barrie, Bob
 Barrie, Myron
 Beckmann, Pat
 Born, Lary
 Boyer, Tim and Audra
 Brummund, Sheri
 Buom, Karen and Marty
 Cliff, Barb
 Dennis, Delores and Greg
 Dunn, Dave and Melissa
 Dunn, Jane
 Espe, Charles and Kathy
 Ferch, Karen and Vern
 Fostveit, Donna
 Gilbertson, Carolyn and Terry
 Grant, Linda
 Hedtke, Jeff
 Henkensefken, Larry
 Hofmeister, Marty
 Jones, Karl
 Kanewischer, Trevor
 Kastle, George
 Kugath, Dale
 Kuhn, Jerry
 Lechner, Karen
 Lewer, Henry
 Lodermeier, Doug
 Mathern, Charlie
 Meyer, Justine
 Morris, Rick
 Nelson-Deppe, Nancy
 O'Grady, Judy
 Peters, Jackie and Jurgen
 Peterson, Cap
 Pommerenke, Lori
 Purcell, Pat and Ron
 Reck, Marilee and Milo
 Rieck, Cindy and Perry
 Rohwer, Charlie
 Rose, Al
 Thompson, Jeanie Lorenz

Youngberg, Kate
"Celebrating Herter's"

Event Sponsors:

Waseca VFW Post 1642
 Jim and Moira Tippy
 Jerry and Linda Rutledge
 Dave and Melissa Dunn
AND these area businesses:
 Roundbank
 Cabela's
 Winegar Inc.
 Waseca Floral
 State Farm Insurance
 First National Bank
 Deml Ford/Lincoln
 New Richland Historical Society
 iWealth
 WasecaAlums.com
 Good News
 Kieslers Campground & RV Center
 Healing Hands Wellness Group
 Suburban Furniture
 ICAN, Inc.
 ServiceMaster, Mankato/Waseca
 Personalized Printing
 Charlie's Do-It Best Hardware
 Sportsman Stop
 EdwardJones
 Thrivent-Waseca & New Richland

Rock & Roll Musicians

The Bands:

The Thunderbeats
 Cletus Hane
 Sands of Tyme
 The Esquires

The Individuals:

Larry Hofmann
 Bob Grobe
 Doug Neste
 Jerome Broughten
 Bob Stephan
 Danny Westphal
 Jerome Broughten
 Keith Deike
 Jody Wynnemer, for Jim Kozan
 Steve McLoone
 John Anthony
 Rick Kritzer
 Mike "Tweed" Johnson
 Jim Downie
 The Mullens—Tom, Mike, Frankie, Katie

WCHS & OTHER EVENTS

October 8 | WCHS Board Meeting, 6 p.m.

October 10, 11, 17 & 18 | Farmamerica Haunted Corn Maze and Mill, 6:30-9:30 p.m.

October 25 | All Hallows Eve, Farmamerica, 12-4 p.m.

November 9 | Sunday Brunch & WCHS Annual Meeting & Election, details TBA

November 4 | Election Day, don't forget to vote!

November 12 | WCHS Board Meeting, 6 p.m.

November 13 | Give-to-the-Max Day

November 27 | Happy Thanksgiving!

December 6 | WCHS Open House, "A Herter's Holiday Party" 12-5 p.m., FREE & Open to Public, Cookies & Hot Cider

December 6 & 7 | Waseca Art Center, Holiday Concert, Meghan Krause & Gavin Berg, wasecaartscouncil.org

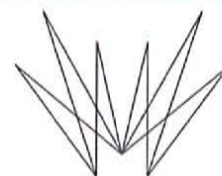
December 6 & 7 | Christmas Times A'Comin', Central Building Auditorium, tickets at Waseca Music

December 10 | WCHS Board Meeting & Party

Open Saturdays, too! 12-3 p.m.

Always check our website for latest information:

www.historical.waseca.mn.us



Grant Recipient
 MINNESOTA HISTORICAL
 & CULTURAL GRANTS

Made possible by the Arts and Cultural Heritage Fund through the vote of Minnesotans on November 4, 2008. Administered by the Minnesota Historical Society.



Waseca VFW 1642

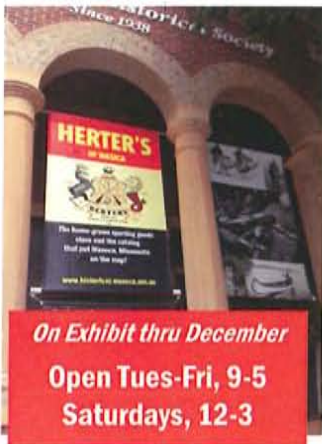


CHARLIE'S HARDWARE



www.historical.waseca.mn.us

RETURN SERVICE REQUESTED



Membership Renewal Date



Gift Shop



NEW! WCHS T-SHIRTS
with the young George Herter fishing "You can't write this stuff!" \$15

At the Museum Gift Shop open Tues-Fri, 9-5; Saturdays, 12-3 thru December 2014

To New Genealogists:

Genealogy, a Journey of Discovery

Instructor: Don Aldrich
Offered in cooperation with the Waseca County Historical Society. Genealogy research is not just about your ancestors, it's also about self-discovery. You'll learn more about yourself as you travel the *pedigree trail*. Look in the mirror. Where'd you get those eyes? How about that temper? Is there a genetic predisposition for certain diseases? We'll show you that *how* you know is as important as *what* you know—always remembering that your search isn't just about names, it's about people. WCHS members get \$5 discount.

2015A: The Basics

\$15/\$10 for WCHS members
Tuesdays, 6:30 to 8:30 p.m., Sept 23, Sept 30, Oct 7; CB, Room 153

2015B: More Than the Basics

\$15/\$10 for WCHS members
Tuesdays, 6:30 to 8:30 p.m., Oct 14, Oct 21, Oct 28; CB, Room 153

Contact Community Education for more information, (507) 835-5626. CB is the Central Building, 501 E. Elm Ave., Waseca

Katherine Rieck, Museum Intern heads to Grad School

One of the joys of our work this summer was working with Waseca native, Katherine Rieck. She volunteered early last spring regularly to fill in her summer before grad school in the Fall. She became so valuable and fun to work with, it was hard to send her off to grad school. We are grateful and wish Katherine the very best!